

Software Utility User Manual

Application Note

Content

Content.....	1
Purpose.....	2
Steps.....	2

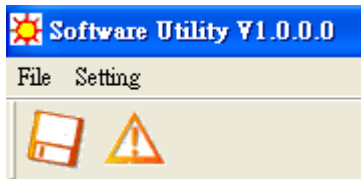
Purpose

Introduction to functionality of Software Utility

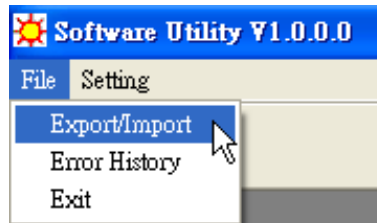
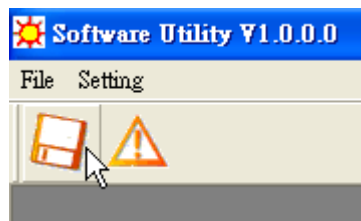
Steps

A. To import inverter status data

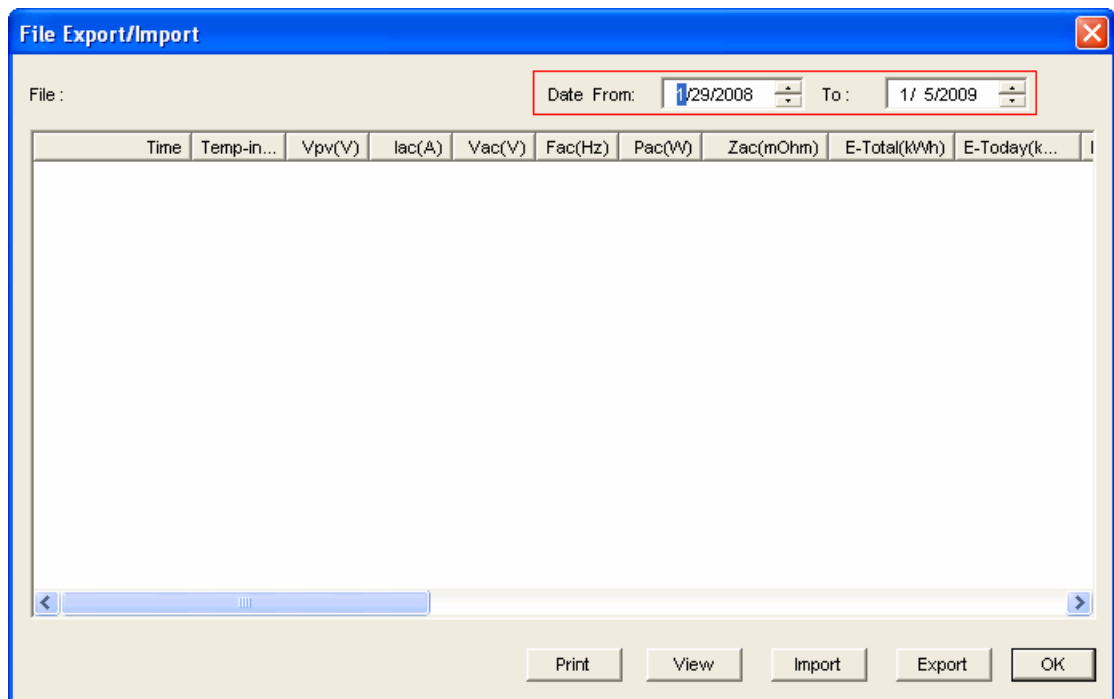
1. Double-Click Software Utility.exe



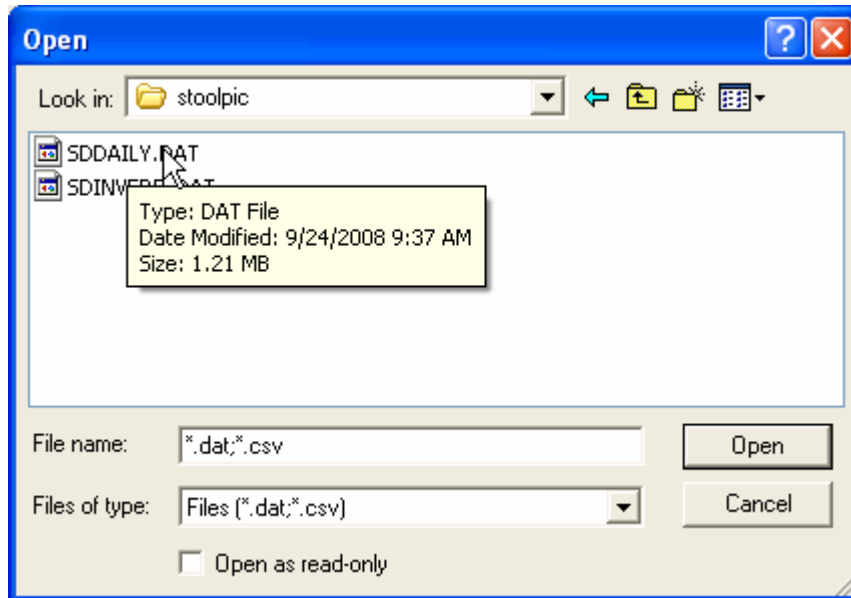
2. Click floppy disk icon or Select Export/Import under File tab



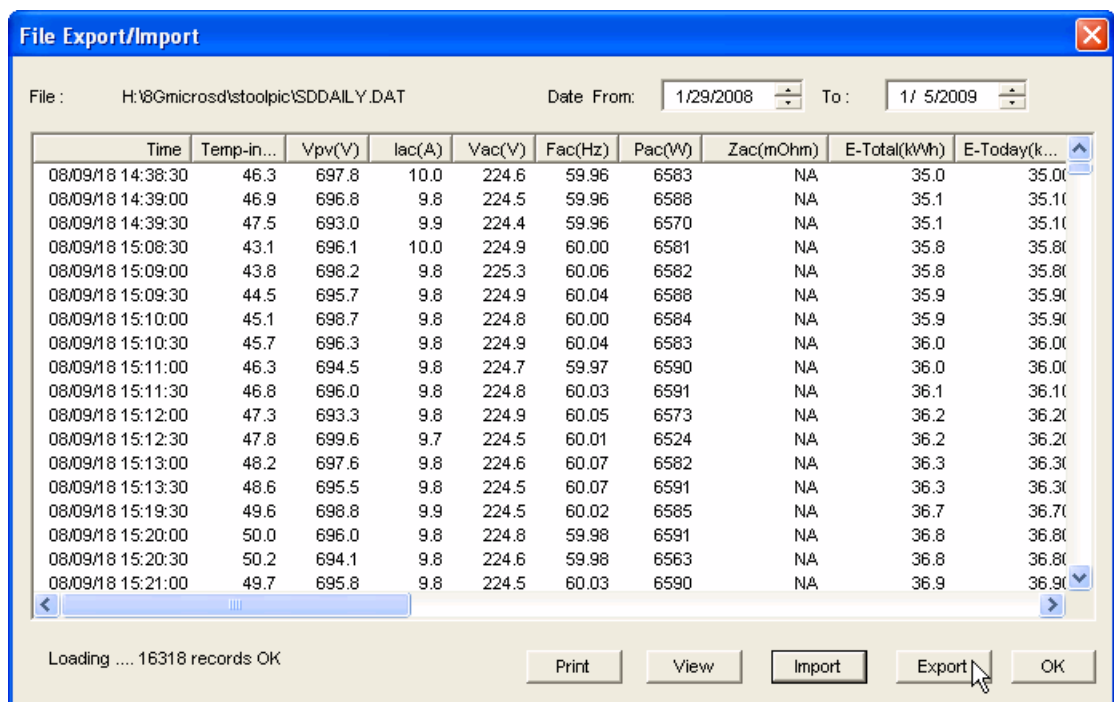
3. Select Date range in framed area



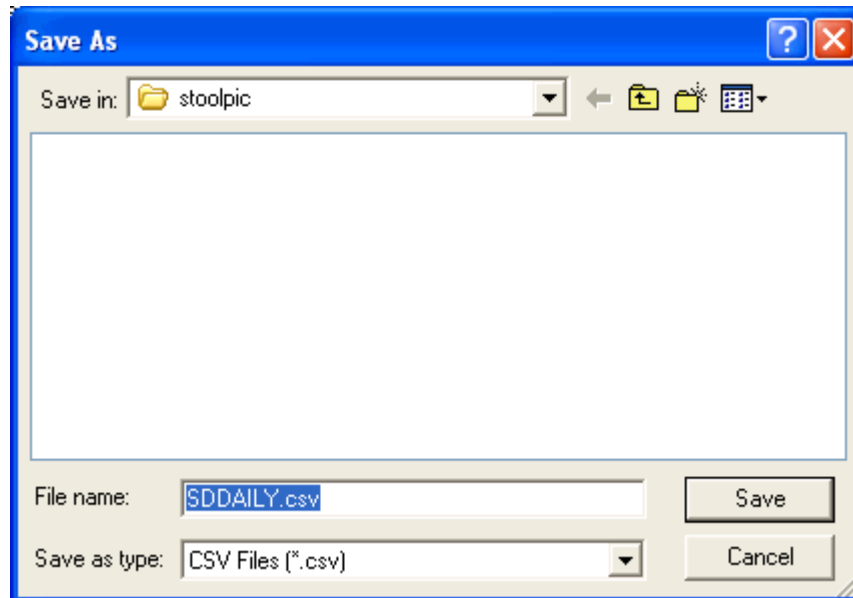
4. Click Import button and browse the *.DAT file



5. You can view data by scroll down or left. Click Export button to convert the DAT file to CSV format.

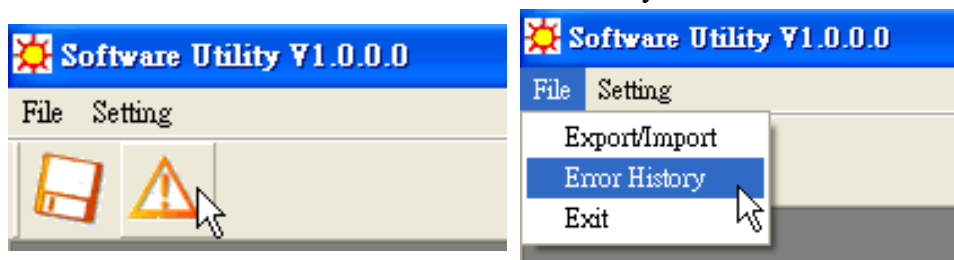


6. Name and save the file in a location

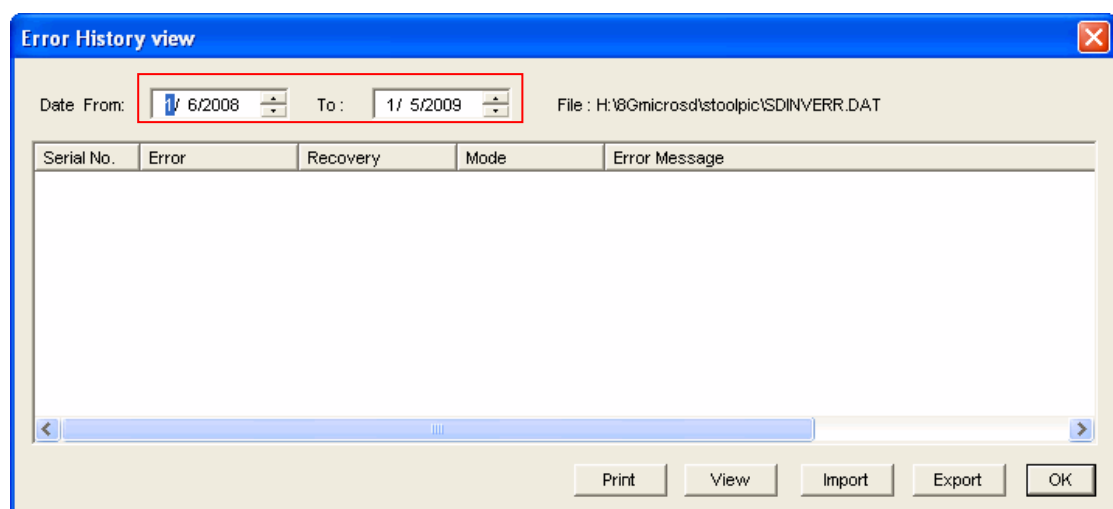


B. To import inverter error message

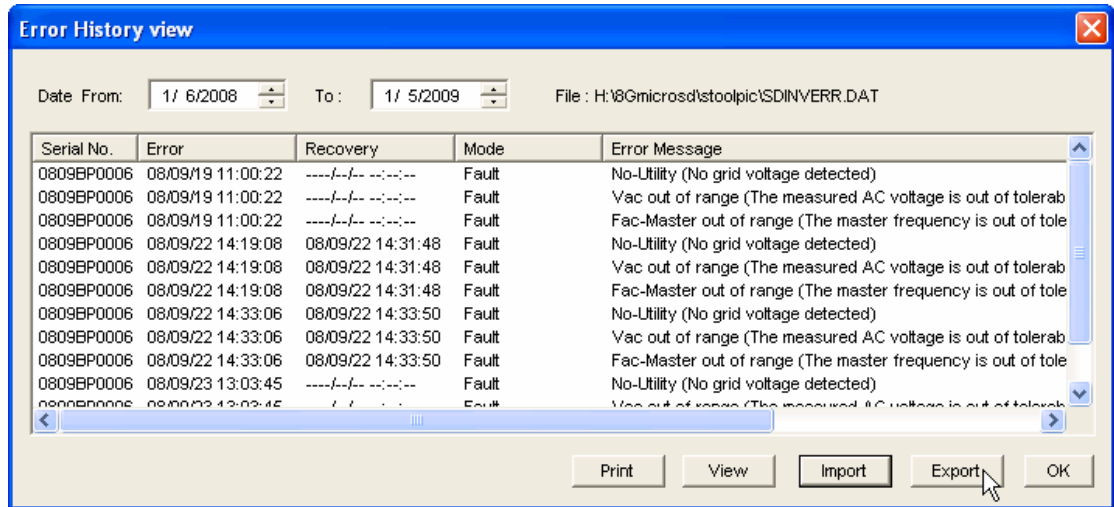
1. Click exclamation icon or Click Error History under File tab



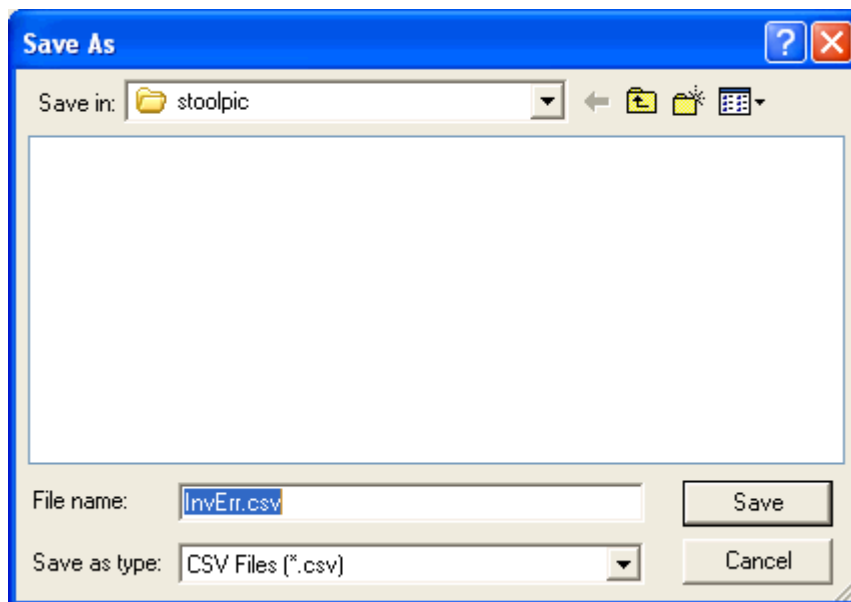
2. Select Date range in framed area



3. You can view data by scroll down or left. Click Export button to convert the DAT file to CSV format.



4. Name and save the file in a location



C. Click Language under Setting tab to change language

